

Social Welfare Services

Social Welfare Facilities and Services Offered

The City, through the Office of the City Social Welfare and Development Services Officer, continuously provide various support activities and services to promote the general welfare of the people. The active social welfare services offered by the City and their corresponding beneficiaries are listed in Table 1. Among these services, the Senior Citizens Program and Operation Timbang Plus are the two (2) nutrition-specific programs with the greatest number of beneficiaries.

Table 1. Number of Beneficiaries by Social Welfare Activities, 2018

Social Welfare Activities	Beneficiaries	Social Welfare Activities	Beneficiaries
Operation Timbang Plus	26,702	Burial Assistance	220
Nutrition-specific Programs:		Solo Parents' Program:	
Dietary Supplementation Program	3,726	IDs Issued	1,076
Nutrition Promotion Program	166	Other Programs	2,461
Nutrition-sensitive Program	1,066	Services and Programs for the PWD:	
Enabling Programs	181	PWD IDs Issued	1,398
Economic Productivity of PYAP Members	82	Other Programs	2,461
Social Responsibility, Volunteerism and Leadership Training Activities of PYAP Members	1,815	Emergency Assurances	1,093
Promotion of Positive Lifestyle and Personality Enhancement	2,291	PhilHealth	1,000
Practical Skills Training	892	Certificate of Indigencies Issuances	1,268
Family Planning (Pre-Counseling Certificates)	1,172	Social Pension	1,233
Children and Women's Welfare Program	1,658	4Ps Program	2,735
Sustainable Livelihood Program	865	Early Childhood Care and Development Unit: Cumulative Attendees of Whole-Year Activities	16,284
Senior Citizens Program	31,617		
AICS	5,289	Barangay Service Point Officers Programs	1,051

Source: Office of the City Social Welfare and Development Officer

Shown in Table 2 the thorough list of social welfare facilities in the city presenting its susceptibility to hazards. Among the facilities present is one (1) Senior Citizen Office located at Barangay Bagumbayan that is low susceptible to flood and liquefaction, and high susceptible to ground shaking.

Day Care Centers (see Map **Error! No text of specified style in document.**—1. Social Welfare Facilities Map), there are a total of 64 facilities serving children ages 3 to 4 years with at least one (1) day care worker and/or one (1) center aide per day care center. All day care centers are high susceptible to ground shaking. Three (3) day care facilities are low susceptible to landslide located at Barangays Pasong Camachile II and Pasong Kawayan II. Then 11 facilities are low susceptible to flood and liquefaction (Barangays Bagumbayan, Corregidor, Navarro, Pinagtipunan, Prinza, and San

Juan I and II), four (4) are moderately susceptible to flood and liquefaction (Barangays Dulong Bayan, San Gabriel, and Bacao I and II), Barangay Tejero is low susceptible to flood and moderately to liquefaction, while Barangay Sta. Clara is moderately susceptible to flood and low to liquefaction.

For feeding center/programs, mostly are serviced at day care centers aiding also children ages 3-4 years with at least one (1) day care center and/or 1 center aide per day care center. There is a total of 65 recorded facilities used for supplemental feeding for children wherein all facilities are high susceptible to ground shaking. Two (2) feeding centers low susceptible to landslide situated at Barangay Pasong Camachile II, then 12 facilities are low susceptible to flood and liquefaction (Barangays Bagumbayan, Corregidor, Navarro, Pinagtipunan, Prinza, and San Juan I and II), four (4) are moderately susceptible to flood and liquefaction (Barangays Dulong Bayan, San Gabriel, and Bacao I and II), Barangay Tejero is low susceptible to flood and moderately to liquefaction, and Barangay Sta. Clara moderately susceptible to flood and low to liquefaction.

Other clientele served like persons with disability are catered at PWD/Disabled Center located at Barangay Bagumbayan which is low susceptible to flood and liquefaction, and high susceptible to ground shaking. Private orphanage for out of school youth at Barangay Biclatan is high susceptible to ground shaking, also for abandoned/ neglected/surrendered children and/or youth situated at Barangays: Barangay Santiago which is high susceptible to ground shaking, Barangay Navarro (high susceptible to ground shaking and for flood and liquefaction is low), and Barangay San Francisco (high susceptible to ground shaking and low to landslide). There is also a public orphanage for abandoned/ neglected/surrendered children and/or youth located at Barangay Pasong Camachile I that is low susceptible to flood and high susceptible to ground shaking.

Livelihood/Productivity Center is also present as other facility for social services catering disadvantage women (18-59 y/o), housewife, out of school youth/youth (13-24 y/o) offering courses like massage therapy, food and beverage services, bread and pastry production, electrical products assembly and servicing, hair/beauty care, dressmaking, integrated food processing, cookery, wellness massage among others. The facility is located at Barangay Santiago which is high susceptible to ground shaking.

Table 2. Inventory of Social Welfare Facilities and Services Offered, 2018

Facility	Barangay	Type of Clientele	No. of Clientele	Staff	Owner ship	Physical Condition	Hazard Susceptibility (H/M/L)			
							FI	GS	Ln	Lq
Senior Citizen Center										
Senior Citizens Office	Bagumbayan	Senior citizens/ older persons (60y.o and above)	1980	6 staff	Public	Fair	L	H		L
Daycare										
Alingaro Day Care Center	Alingaro	Children (3-4 years old)	50 enrollees	1 daycare worker/ 1 center aide	Public	Fair		H		
Bacao 1 Day Care Center	Bacao 1	Children (3-4 years old)	37 enrollees	1 daycare worker/ 1 center aide	Public	Fair	M	H		M
Bacao 2 Day Care Center	Bacao 2	Children (3-4 years old)	60 enrollees	1 daycare worker/ 1 center aide	Public	Fair	M	H		M
Bagumbayan Day Care Center	Bagumbayan	Children (3-4 years old)	48 enrollees	1 daycare worker/ 1 center aide	Public	Fair	L	H		L
Biclatan Day Care Center	Biclatan	Children (3-4 years old)	48 enrollees	1 daycare worker/ 1 center aide	Public	Fair		H		
Holiday Homes Day Care Center	Biclatan	Children (3-4 years old)	44 enrollees	1 daycare worker/ 1 center aide	Public	Fair		H		
Buenavista 1 Day Care Center	Buenavista 1	Children (3-4 years old)	76 enrollees	1 daycare worker/ 1 center aide	Public	Fair		H		
Buenavista 2 Day Care Center	Buenavista 2	Children (3-4 years old)	65 enrollees	1 daycare worker/ 1 center aide	Public	Fair		H		
Tahanang Yaman Day Care Center	Buenavista 2	Children (3-4 years old)	47 enrollees	1 daycare worker/ 1 center aide	Public	Fair		H		
Buenavista 3 Day Care Center	Buenavista 3	Children (3-4 years old)	59 enrollees	1 daycare worker/ 1 center aide	Public	Fair		H		
Corregidor Day Care Center	Corregidor	Children (3-4 years old)	56 enrollees	1 daycare worker/ 1 center aide	Public	Fair	L	H		L
Dulong Bayan Day Care Center	Dulong Bayan	Children (3-4 years old)	35 enrollees	1 daycare worker/ 1 center aide	Public	Fair	M	H		M
Javalera Proper Day Care Center	Javalera	Children (3-4 years old)	42 enrollees	1 daycare worker/ 1 center aide	Public	Fair		H		
Javalera Phase I Day Care Center	Javalera	Children (3-4 years old)	47 enrollees	1 daycare worker/ 1 center aide	Public	Fair		H		

Facility	Barangay	Type of Clientele	No. of Clientele	Staff	Owner ship	Physical Condition	Hazard Susceptibility (H/M/L)			
							FI	GS	Ln	Lq
Manggahan Day Care Center I	Manggahan	Children (3-4 years old)	42 enrollees	1 daycare worker/ 1 center aide	Public	Fair		H		
Manggahan Day Care Center II	Manggahan	Children (3-4 years old)	46 enrollees	1 daycare worker/ 1 center aide	Public	Fair		H		
Tinungan	Manggahan	Children (3-4 years old)	59 enrollees	1 daycare worker/ 1 center aide	Public	Fair		H		
Stateland	Manggahan	Children (3-4 years old)	63 enrollees	1 daycare worker/ 1 center aide	Public	Fair		H		
Navarro Day Care Center	Navarro	Children (3-4 years old)	89 enrollees	1 daycare worker/ 1 center aide	Public	Fair	L	H		L
ACM I Day Care Center	Navarro	Children (3-4 years old)	46 enrollees	1 daycare worker/ 1 center aide	Public	Fair	L	H		L
ACM II Day Care Center	Navarro	Children (3-4 years old)	50 enrollees	1 daycare worker/ 1 center aide	Public	Fair	L	H		L
La Presa	Navarro	Children (3-4 years old)	38 enrollees	1 daycare worker/ 1 center aide	Public	Fair	L	H		L
Richmond	Navarro	Children (3-4 years old)	46 enrollees	1 daycare worker/ 1 center aide	Public	Fair	L	H		L
Panungyanan Day Care Center	Panungyanan	Children (3-4 years old)	56 enrollees	1 daycare worker/ 1 center aide	Public	Fair		H		
Pascam I Day Care Center	Pasong Camachile 1	Children (3-4 years old)	50 enrollees	1 daycare worker/ 1 center aide	Public	Fair		H		
Grand Riverside I Day Care Center	Pasong Camachile 1	Children (3-4 years old)	50 enrollees	1 daycare worker/ 1 center aide	Public	Fair		H		
Grand Riverside II Day Care Center	Pasong Camachile 1	Children (3-4 years old)	52 enrollees	1 daycare worker/ 1 center aide	Public	Fair		H		
Camachile Subd. Day Care Center	Pasong Camachile 1	Children (3-4 years old)	55 enrollees	1 daycare worker/ 1 center aide	Public	Fair		H		
Pascam II Day Care Center	Pasong Camachile 2	Children (3-4 years old)	55 enrollees	1 daycare worker/ 1 center aide	Public	Fair		H		
Mary Cris I Day Care Center	Pasong Camachile 2	Children (3-4 years old)	54 enrollees	1 daycare worker/ 1 center aide	Public	Fair		H	L	
Mary Cris II Day Care Center	Pasong Camachile 2	Children (3-4 years old)	66 enrollees	1 daycare worker/ 1 center aide	Public	Fair		H	L	

Facility	Barangay	Type of Clientele	No. of Clientele	Staff	Owner ship	Physical Condition	Hazard Susceptibility (H/M/L)			
							FI	GS	Ln	Lq
Mary Cris III Day Care Center	Pasong Camachile 2	Children (3-4 years old)	62 enrollees	1 daycare worker/ 1 center aide	Public	Fair		H		
Mary Cris IV Day Care Center	Pasong Camachile 2	Children (3-4 years old)	64 enrollees	1 daycare worker/ 1 center aide	Public	Fair		H		
Mary Cris V Day Care Center	Pasong Camachile 2	Children (3-4 years old)	50 enrollees	1 daycare worker/ 1 center aide	Public	Fair		H		
KPNP	Pasong Camachile 2	Children (3-4 years old)	55 enrollees	1 daycare worker/ 1 center aide	Public	Fair		H		
Pinagtipunan Day Care Center	Pinagtipunan	Children (3-4 years old)	50 enrollees	1 daycare worker/ 1 center aide	Public	Fair	L	H		L
Pasong Kawayan I Day Care Center	Pasong Kawayan 1	Children (3-4 years old)	58 enrollees	1 daycare worker/ 1 center aide	Public	Fair		H		
Heneral Uno Day Care Center	Pasong Kawayan 2	Children (3-4 years old)	70 enrollees	1 daycare worker/ 1 center aide	Public	Fair		H		
Pasong Kawayan II Day Care Center	Pasong Kawayan 2	Children (3-4 years old)	73 enrollees	1 daycare worker/ 1 center aide	Public	Fair		H		
Belmont Day Care Center	Pasong Kawayan 2	Children (3-4 years old)	70 enrollees	1 daycare worker/ 1 center aide	Public	Fair		H	L	
Pamayanang Maliksi Day Care Center	Pasong Kawayan 2	Children (3-4 years old)	67 enrollees	1 daycare worker/ 1 center aide	Public	Fair		H		
Castillon	Pasong Kawayan 2	Children (3-4 years old)	65 enrollees	1 daycare worker/ 1 center aide	Public	Fair		H		
Prinza Day Care Center	Prinza	Children (3-4 years old)	32 enrollees	1 daycare worker/ 1 center aide	Public	Fair	L	H		L
San Juan I Day Care Center	San Juan 1	Children (3-4 years old)	58 enrollees	1 daycare worker/ 1 center aide	Public	Fair	L	H		L
San Juan II Day Care Center	San Juan 2	Children (3-4 years old)	45 enrollees	1 daycare worker/ 1 center aide	Public	Fair	L	H		L
San Francisco Day Care Center	San Francisco	Children (3-4 years old)	63 enrollees	1 daycare worker/ 1 center aide	Public	Fair		H		
Sunny Brooke 1-A	San Francisco	Children (3-4 years old)	55 enrollees	1 daycare worker/ 1 center aide	Public	Fair		H		
Sunny Brooke 1-B	San Francisco	Children (3-4 years old)	46 enrollees	1 daycare worker/ 1 center aide	Public	Fair		H		

Facility	Barangay	Type of Clientele	No. of Clientele	Staff	Owner ship	Physical Condition	Hazard Susceptibility (H/M/L)			
							FI	GS	Ln	Lq
Sunny Brooke II-A	San Francisco	Children (3-4 years old)	60 enrollees	1 daycare worker/ 1 center aide	Public	Fair		H		
Sunny Brooke II-B	San Francisco	Children (3-4 years old)	60 enrollees	1 daycare worker/ 1 center aide	Public	Fair		H		
Parklane	San Francisco	Children (3-4 years old)	60 enrollees	1 daycare worker/ 1 center aide	Public	Fair		H		
Country Meadow	San Francisco	Children (3-4 years old)	60 enrollees	1 daycare worker/ 1 center aide	Public	Fair		H		
Elang	San Francisco	Children (3-4 years old)	61 enrollees	1 daycare worker/ 1 center aide	Public	Fair		H		
Sitio de Fuego	San Francisco	Children (3-4 years old)	41 enrollees	1 daycare worker/ 1 center aide	Public	Fair		H		
Tropical Village 1	San Francisco	Children (3-4 years old)	58 enrollees	1 daycare worker/ 1 center aide	Public	Fair		H		
Tropical Village 2	San Francisco	Children (3-4 years old)	52 enrollees	1 daycare worker/ 1 center aide	Public	Fair		H		
Tropical Village 3	San Francisco	Children (3-4 years old)	48 enrollees	1 daycare worker/ 1 center aide	Public	Fair		H		
San Gabriel Day Care Center	San Gabriel	Children (3-4 years old)	38 enrollees	1 daycare worker/ 1 center aide	Public	Fair	M	H		M
Santiago Day Care Center	Santiago	Children (3-4 years old)	60 enrollees	1 daycare worker/ 1 center aide	Public	Fair		H		
Santiago B	Santiago	Children (3-4 years old)	67 enrollees	1 daycare worker/ 1 center aide	Public	Fair		H		
Carapiohan	Santiago	Children (3-4 years old)	60 enrollees	1 daycare worker/ 1 center aide	Public	Fair		H		
Sta. Clara Day Care Center	Sta. Clara	Children (3-4 years old)	40 enrollees	1 daycare worker/ 1 center aide	Public	Fair	M	H		L
Tapia Day Care Center	Tapia	Children (3-4 years old)	47 enrollees	1 daycare worker/ 1 center aide	Public	Fair		H		
Tejero Day Care Center	Tejero	Children (3-4 years old)	80 enrollees	1 daycare worker/ 1 center aide	Public	Fair	L	H		M
Feeding Center										
Alingaro Day Care Center	Alingaro	Children (3-4 years old)	40	1 daycare worker/ 1 center aide	Public	Fair		H		

Facility	Barangay	Type of Clientele	No. of Clientele	Staff	Owner ship	Physical Condition	Hazard Susceptibility (H/M/L)			
							FI	GS	Ln	Lq
Bacao 1 Day Care Center	Bacao 1	Children (3-4 years old)	45	1 daycare worker/ 1 center aide	Public	Fair	M	H		M
Bacao 2 Day Care Center	Bacao 2	Children (3-4 years old)	67	1 daycare worker/ 1 center aide	Public	Fair	M	H		M
Bagumbayan Day Care Center	Bagumbayan	Children (3-4 years old)	30	1 daycare worker/ 1 center aide	Public	Fair	L	H		L
Biclatan Day Care Center	Biclatan	Children (3-4 years old)	41	1 daycare worker/ 1 center aide	Public	Fair		H		
Holiday Homes Day Care Center	Biclatan	Children (3-4 years old)	36	1 daycare worker/ 1 center aide	Public	Fair		H		
Buenavista 1 Day Care Center	Buenavista 1	Children (3-4 years old)	45	1 daycare worker/ 1 center aide	Public	Fair		H		
Buenavista 2 Day Care Center	Buenavista 2	Children (3-4 years old)	56	1 daycare worker/ 1 center aide	Public	Fair		H		
Tahanang Yaman Day Care Center	Buenavista 2	Children (3-4 years old)	40	1 daycare worker/ 1 center aide	Public	Fair		H		
Buenavista 3 Day Care Center	Buenavista 3	Children (3-4 years old)	60	1 daycare worker/ 1 center aide	Public	Fair		H		
Corregidor Day Care Center	Corregidor	Children (3-4 years old)	40	1 daycare worker/ 1 center aide	Public	Fair	L	H		L
Dulong Bayan Day Care Center	Dulong Bayan	Children (3-4 years old)	35	1 daycare worker/ 1 center aide	Public	Fair	M	H		M
Javalera Proper Day Care Center	Javalera	Children (3-4 years old)	32	1 daycare worker/ 1 center aide	Public	Fair		H		
Javalera Phase I Day Care Center	Javalera	Children (3-4 years old)	45	1 daycare worker/ 1 center aide	Public	Fair		H		
Manggahan Day Care Center I	Manggahan	Children (3-4 years old)	35	1 daycare worker/ 1 center aide	Public	Fair		H		
Manggahan Day Care Center II	Manggahan	Children (3-4 years old)	34	1 daycare worker/ 1 center aide	Public	Fair		H		
Tinungan	Manggahan	Children (3-4 years old)	45	1 daycare worker/ 1 center aide	Public	Fair		H		
Stateland	Manggahan	Children (3-4 years old)	50	1 daycare worker/ 1 center aide	Public	Fair		H		

Facility	Barangay	Type of Clientele	No. of Clientele	Staff	Owner ship	Physical Condition	Hazard Susceptibility (H/M/L)			
							FI	GS	Ln	Lq
Navarro Day Care Center	Navarro	Children (3-4 years old)	58	1 daycare worker/ 1 center aide	Public	Fair	L	H		L
La Presa	Navarro	Children (3-4 years old)	40	1 daycare worker/ 1 center aide	Public	Fair	L	H		L
Richmond	Navarro	Children (3-4 years old)	45	1 daycare worker/ 1 center aide	Public	Fair	L	H		L
Panungyanan Day Care Center	Panungyanan	Children (3-4 years old)	51	1 daycare worker/ 1 center aide	Public	Fair		H		
Pascam I Day Care Center	Pasong Camachile 1	Children (3-4 years old)	50	1 daycare worker/ 1 center aide	Public	Fair		H		
Grand Riverside I Day Care Center	Pasong Camachile 1	Children (3-4 years old)	55	1 daycare worker/ 1 center aide	Public	Fair		H		
Grand Riverside II Day Care Center	Pasong Camachile 1	Children (3-4 years old)	54	1 daycare worker/ 1 center aide	Public	Fair		H		
Camachile Subd. Day Care Center	Pasong Camachile 1	Children (3-4 years old)	50	1 daycare worker/ 1 center aide	Public	Fair		H		
Pascam II Day Care Center	Pasong Camachile 2	Children (3-4 years old)	56	1 daycare worker/ 1 center aide	Public	Fair		H		
Mary Cris I Day Care Center	Pasong Camachile 2	Children (3-4 years old)	55	1 daycare worker/ 1 center aide	Public	Fair		H	L	
Mary Cris II Day Care Center	Pasong Camachile 2	Children (3-4 years old)	56	1 daycare worker/ 1 center aide	Public	Fair		H	L	
Mary Cris III Day Care Center	Pasong Camachile 2	Children (3-4 years old)	53	1 daycare worker/ 1 center aide	Public	Fair		H		
Mary Cris IV Day Care Center	Pasong Camachile 2	Children (3-4 years old)	55	1 daycare worker/ 1 center aide	Public	Fair		H		
Mary Cris V Day Care Center	Pasong Camachile 2	Children (3-4 years old)	60	1 daycare worker/ 1 center aide	Public	Fair		H		
KPNP	Pasong Camachile 2	Children (3-4 years old)	50	1 daycare worker/ 1 center aide	Public	Fair		H		
Pinagtipunan Day Care Center	Pinagtipunan	Children (3-4 years old)	60	1 daycare worker/ 1 center aide	Public	Fair	L	H		L
Pasong Kawayan I Day Care Center	Pasong Kawayan 1	Children (3-4 years old)	52	1 daycare worker/ 1 center aide	Public	Fair		H		

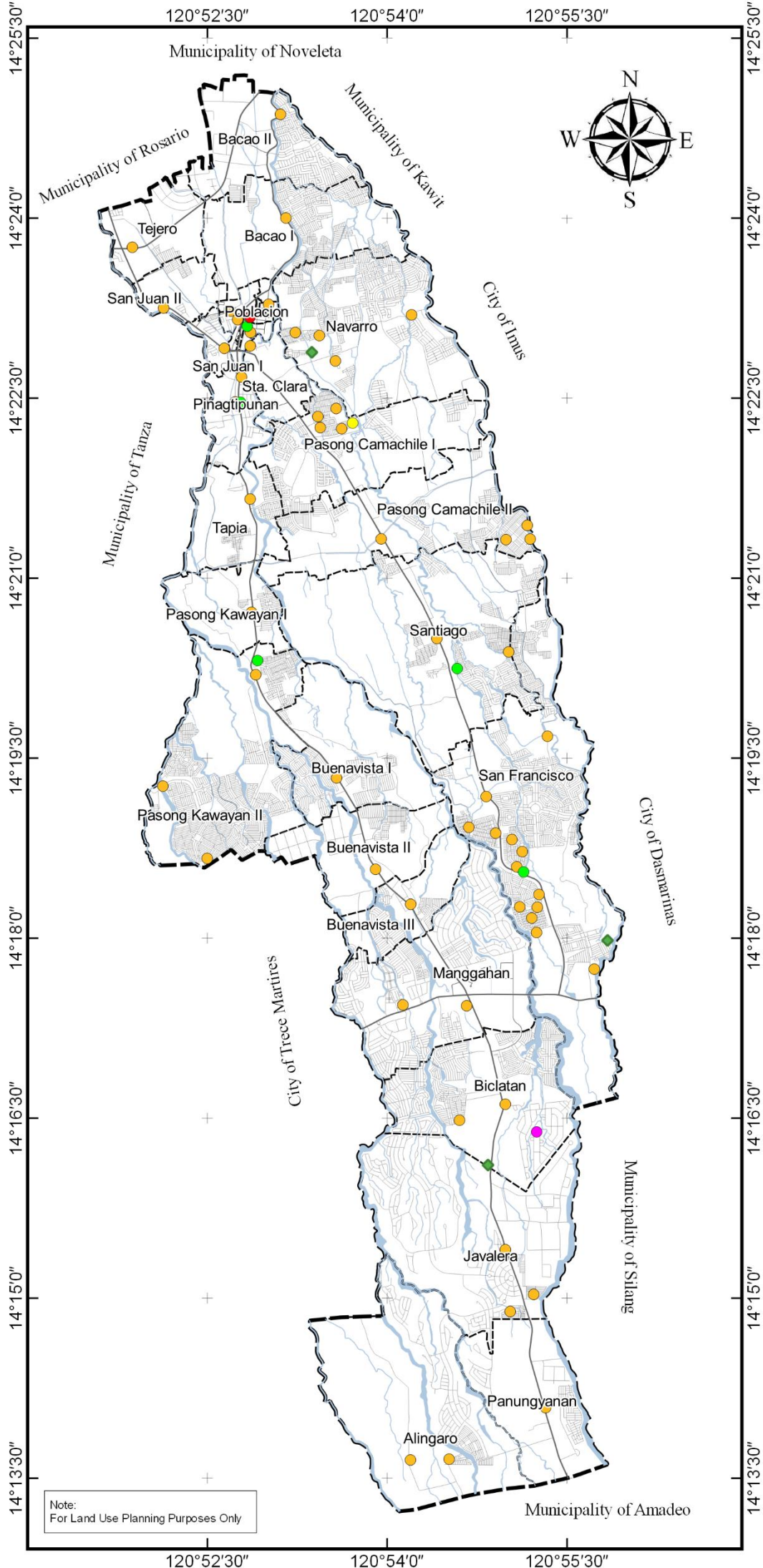
Facility	Barangay	Type of Clientele	No. of Clientele	Staff	Owner ship	Physical Condition	Hazard Susceptibility (H/M/L)			
							FI	GS	Ln	Lq
Pasong Kawayan II Day Care Center	Pasong Kawayan 2	Children (3-4 years old)	75	1 daycare worker/ 1 center aide	Public	Fair		H		
Pamayanang Maliksi Day Care Center	Pasong Kawayan 2	Children (3-4 years old)	40	1 daycare worker/ 1 center aide	Public	Fair		H		
Castillon	Pasong Kawayan 2	Children (3-4 years old)	43	1 daycare worker/ 1 center aide	Public	Fair		H		
Prinza Day Care Center	Prinza	Children (3-4 years old)	26	1 daycare worker/ 1 center aide	Public	Fair	L	H		L
San Juan I Day Care Center	San Juan 1	Children (3-4 years old)	55	1 daycare worker/ 1 center aide	Public	Fair	L	H		L
San Juan II Day Care Center	San Juan 2	Children (3-4 years old)	40	1 daycare worker/ 1 center aide	Public	Fair	L	H		L
Sunny Brooke 1-A	San Francisco	Children (3-4 years old)	58	1 daycare worker/ 1 center aide	Public	Fair		H		
Sunny Brooke 1-B	San Francisco	Children (3-4 years old)	55	1 daycare worker/ 1 center aide	Public	Fair		H		
Sunny Brooke II-A	San Francisco	Children (3-4 years old)	52	1 daycare worker/ 1 center aide	Public	Fair		H		
Sunny Brooke II-B	San Francisco	Children (3-4 years old)	60	1 daycare worker/ 1 center aide	Public	Fair		H		
Country Meadow	San Francisco	Children (3-4 years old)	45	1 daycare worker/ 1 center aide	Public	Fair		H		
Elang	San Francisco	Children (3-4 years old)	56	1 daycare worker/ 1 center aide	Public	Fair		H		
Sitio de Fuego	San Francisco	Children (3-4 years old)	46	1 daycare worker/ 1 center aide	Public	Fair		H		
Tropical Village 1	San Francisco	Children (3-4 years old)	44	1 daycare worker/ 1 center aide	Public	Fair		H		
Tropical Village 2	San Francisco	Children (3-4 years old)	58	1 daycare worker/ 1 center aide	Public	Fair		H		
Tropical Village 3	San Francisco	Children (3-4 years old)	47	1 daycare worker/ 1 center aide	Public	Fair		H		
San Gabriel Day Care Center	San Gabriel	Children (3-4 years old)	25	1 daycare worker/ 1 center aide	Public	Fair	M	H		M

Facility	Barangay	Type of Clientele	No. of Clientele	Staff	Owner ship	Physical Condition	Hazard Susceptibility (H/M/L)			
							FI	GS	Ln	Lq
Santiago Day Care Center	Santiago	Children (3-4 years old)	53	1 daycare worker/ 1 center aide	Public	Fair		H		
Santiago B	Santiago	Children (3-4 years old)	59	1 daycare worker/ 1 center aide	Public	Fair		H		
Sta. Clara Day Care Center	Sta. Clara	Children (3-4 years old)	38	1 daycare worker/ 1 center aide	Public	Fair	M	H		L
Tapia Day Care Center	Tapia	Children (3-4 years old)	43	1 daycare worker/ 1 center aide	Public	Fair		H		
Tejero Day Care Center	Tejero	Children (3-4 years old)	61	1 daycare worker/ 1 center aide	Public	Fair	L	H		M
Heneral Dos	Pasong Kawayan 2	Children (3-4 years old)	70	1 daycare worker/ 1 center aide	Public	Fair		H		
Belvedere	Pasong Kawayan 2	Children (3-4 years old)	60	1 daycare worker/ 1 center aide	Public	Fair		H		
Navarro	Navarro	Children (3-4 years old)	59	1 daycare worker/ 1 center aide	Public	Fair	L	H		L
ACM I Day Care Center	Navarro	Children (3-4 years old)	40	1 daycare worker/ 1 center aide	Public	Fair	L	H		L
ACM II Day Care Center	Navarro	Children (3-4 years old)	45	1 daycare worker/ 1 center aide	Public	Fair	L	H		L
Santiago Annex	Santiago	Children (3-4 years old)	60	1 daycare worker/ 1 center aide	Public	Fair		H		
Kiko Rosa	San Francisco	Children (3-4 years old)	73	1 daycare worker/ 1 center aide	Public	Fair		H		
Kanutuan	San Francisco	Children (3-4 years old)	60	1 daycare worker/ 1 center aide	Public	Fair		H		
Others										
PWD/Disabled Center	Bagumbayan	Persons with disabilities	746	4 staff	Public	Fair	L	H		L
Orphanage:										
Brothers of Christ	Biclatan	Out of School Youth	86	16 brothers, 16 staff	Private	Fair		H		
Bukid Kabataan	San Francisco	Abandoned/ Neglected/ Surrendered Children and/or Youth	62	11 staff	Private	Fair		H	L	

Facility	Barangay	Type of Clientele	No. of Clientele	Staff	Owner ship	Physical Condition	Hazard Susceptibility (H/M/L)			
							FI	GS	Ln	Lq
Mama's Hope	Navarro		52	25 regulars, 25 reliever	Private	Fair	L	H		L
Ministries without Borders	Santiago		23	27 employees	Private	Fair		H		
Youth Center	Pasong Camachile 1		16	16 staff	Public	Fair	L	H		
<i>Livelihood/Productivity Center:</i>										
CSWD Training Center	Santiago	Disadvantage Women (18-59 years old)/ Housewife, Out of School Youth/Youth (13-24-year-old)	565	7 staff, 1 security	Public	Fair		H		

Notes: Hazard Susceptibility – High (H), Moderate (M), Low (L); Type of hazards – Flood (FI), Ground Shaking (GS), Landslide (Ln), Liquefaction (Lq). Services Offered: Family Life Education and Counseling, Family Planning Assistance, Day Care Services, Supplemental Feeding, Medical Care, Relief / Rehabilitation, etc.

Source: City Social Welfare and Development Office; City Planning and Development Coordinator's Office

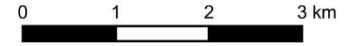


Note:
For Land Use Planning Purposes Only



City of General Trias
Province of Cavite
Region IV-A (CALABARZON)

1:70000



Projection: Transverse Mercator
Geographic Coordinate System: GCS WGS 1984
Datum: D WGS 1984

Social Welfare Facilities Map

Legend:

- City Boundary
- Barangay Boundary
- Rivers / Creeks / Canals
- Road Network
- Type of Facility**
- Bahay Tuluyan
- Center for Disadvantaged Sector
- Center for Senior Citizens
- Day Care Center
- Livelihood / Productivity Center
- Private Orphanage
- Youth / CICL Center

Prepared By:

City Technical Working Group for
Comprehensive Land Use Plan
(2022-2030)

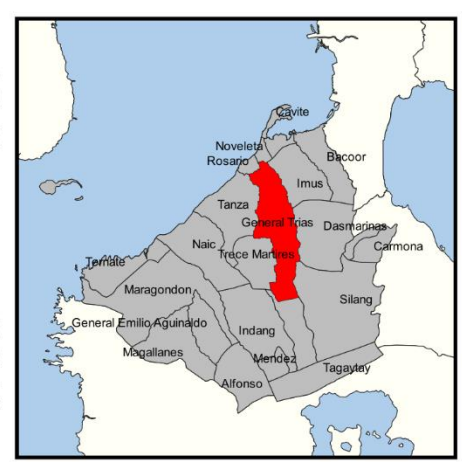


Assisted By:

Department of Human Settlements
and Urban Development
Region IV-A

Sources:

National Mapping and Resource Information
Authority
Google Earth 2021
Office of the City Planning and Development
Coordinator / Zoning Administrator



Historical Number of Population Served by Type of Clientele System

As of 2018, the CSWDO has served a total of 9,112 clienteles as shown in Table 3. Most of them are comprised of disadvantaged families (2,168) and senior citizens (1,980). The number of victims of natural disaster notably increased from 240 in year 2017 to 1,721 in 2018 demonstrating an increase of 617.08%. Similarly, the number of disadvantaged children also increased in 2018 and lists a total number of 1,634 children.

The other type of clienteles served by the CSWDO include persons with disabilities, solo parents, disadvantaged women and youth, victims of man-made disasters, and disadvantaged communities.

Table 3. Historical Number of Population Served by Type of Clientele, 2015-2018

Type of Clientele		2015	2016	2017	2018	% Change (2017-2018)
1	Disadvantaged Families	2,046	2,003	2,151	2,168	0.79
2	Senior Citizens	2,320	1,910	2,078	1,980	-4.72
3	Victims of Natural Disasters	11	0	240	1,721	617.08
4	Disadvantaged Children	1,397	3,328	804	1,634	103.23
5	Persons with Disabilities	622	652	738	746	1.08
6	Solo Parent	532	319	432	684	58.33
7	Disadvantaged Women	149	147	232	111	-52.16
8	Disadvantaged Youth	36	37	38	45	18.42
9	Victims of Man-made Disaster	4	69	5	22	340.00
10	Disadvantaged Communities	0	1	1	1	0.00
Total		7,117	8,466	6,761	9,112	

Source: Office of the City Social Welfare and Development Officer

As of 2017, the City Social Welfare and Development Office (CSWDO) registered their total PWD at 738. The following numbers are those living according to their type of disability: 26 with muteness, 71 with blindness, 50 with deafness and muteness, 21 with speech impairment, 113 with mental retardation, 293 with orthopedic handicap, and 164 with multiple disability (see Table 4). There are no records of persons with mental illnesses.

Table 4. Number of PWD by Type of Disability, 2017

Type of Disability	Number of PWD
Muteness	26
Blindness	71
Deafness and Muteness	50
Speech Impairment	21
Mental Illnesses	0
Intellectual Disability (Mental Retardation)	113
Orthopedic Handicap	293
Multiple Disability	164
Total	738

Source: Office of the City Social Welfare and Development Officer

Social Welfare Related Projects

CSWD also facilitated various National and Provincial projects such as:

- ✓ Under the Sunong Dunong Program of the Provincial Government children were given financial assistance, prepared and submitted 77 indigent PWD students;
- ✓ Strict Implementation of Laws covering VAWC and CICL cases;
- ✓ Organization of Persons with Disability into Association. Currently the city has 33 PWD groups existing with around 4,575 members, wherein 1,398 PWD's were given ID's and booklets so that they can avail discounts and other privileges.

Senior Citizen Program

The CSWD Office provides services to promote the welfare of senior citizens (60 years old and above) through the issuance of senior citizen's identification (OSCA ID) to avail of discounts in public fare, purchase of medicines and availment of medical services. Currently, there are 1,980 senior citizens who are able to use their ID's to get discounts on fares, medicines, and some grocery items. Aside from these, series of medical and dental missions with free medical and audiometric check-ups were conducted for the elderly. Additionally, special projects geared towards the promotion of welfare, health and wellbeing, pleasure of the elderly such as weekly calisthenics and exposure trips, senior citizen's week celebration, out-of-town tours are being done annually.

Sustainable Livelihood Program (SPL)

Formerly Self-Employment Assistance, a livelihood assistance program which involves the provision of an integrated package of social welfare services to needy family heads, disadvantaged women, out-of-school youth, and persons with disabilities to enable them to uplift their economic status. The services include capital assistance, social preparation, capability building, technical assistance and other services related to income generation. In 2019, there were 33 associations with a total of 255 members including needy families and 4P's who benefited from micro-enterprise development.

Women Empowerment

Women have long been involved in community initiatives in various forms. Realizing women's role in community development, the local government has engaged in the formation and organization of Women's Development Council (WDC) that will focus on the promotion and protection of women's and children's rights and welfare. Among the significant programs of WDC were: Annual Free Pap Smear Service, Livelihood Training Programs, Health Programs, Annual Women's Month Celebration and Regular clean-up drive of various barangays. In addition, the WDC takes an active participation in the feeding programs and monitoring of Violence against Women and Children (VAWC) cases. As of 2018, a total of 257 physically abused, 133 psychologically abused, and 228 economically abused were served.

Youth Development

The Office on Youth Affairs and Sports Development had been created to oversee all priority projects of the city in the field of sports development and youth's rights and development. Likewise, the birth of Pag-asa Youth Association (PYAP) in General Trias marked the beginning of a comprehensive program designed to empower the out-of-school youth to learn skills necessary to make academic, social, spiritual and emotional progress toward self-sufficiency and productivity.

Started in 2008 under the supervision of CSWD, with a record of 28 barangay chapters/associations with organized PYAP with a total of 1,386 members in 2019. Of this number, 71 youth availed the

Alternative Learning System (ALS) program, which offers an opportunity for them to complete their primary and secondary education.

Early Childhood Care and Development (ECCD) Project

This project is designed to enhance the quality and coverage of essential health, nutrition, psychosocial development and early education services for 0 to 6-year-old children. It enhances and supplements resources of LGU to meet the needs of these children.

Assistance to Individuals in Crisis Situation (AICS)

Under this program, financial assistance is extended to families in crisis in terms of medicine, burial, transportation and emergency assistance. In 2018, about 5,289 persons benefited from the program.

Social Protection

Services are provided to protect the rights and welfare of children, youth women, older and disabled persons who are abandoned, neglected, abused, and exploited or victims of injustice.

Practical Skills Development (PSD)

This program includes provision of practical trainings for skill development being implemented by CSWD which offer short courses on housekeeping, welding, pre-licensing security guard, English proficiency among others. In 2019, there was a total of 228 participants involving youth, women, family heads who availed of this training courses.

Child and Youth Welfare Program

The city, aside from its strong day care program, also provides community-based services to pre-delinquent youths.

Family and Community Program

Among the services offered by the city under this program are maternal and child care training, marriage counseling, responsible parenthood service and special services to solo parents. The solo parents are also given special support by the local government. A total of 1,076 identified solo parents availed of the ID and is now enjoying the rights and benefits of a single parent as mandated by law.

Current and Projected Need for Social Welfare Services

The existing social welfare facilities (Day Care Centers, Livelihood/Productivity Center, among others) should be expanded and manpower should be increased to meet the needs of the growing population, using the nationally acceptable standard ratios (manpower and facilities to population level).

As of 2018, there are 64 existing day care centers (DCC) in the city and with the demand of 127 DCC in 2021, the city still needs an additional 63 DCC to meet the required standard (see Table 5). Assuming that the current need was already addressed, a total of 18 DCC is to be needed by the end of 2030. Conversely, the city needs to construct a total of 188 DCC by 2030 preferably in low-cost housing areas to meet the demand of the required standards of 1 DCC for every 500 households, addressing it yearly at 21 DCC for the next 9-years.

Presented in Table 6, managing 2 sessions per day care center by barangay, topmost barangays with 14 and above DCC requirement by the end of 2030 are Navarro, Pasong Camachile II, Pasong Kawayan II, San Francisco, and Santiago.

Further, establishment and upgrading of Social Welfare facilities should be given priority and these may include but not limited to the following:

- a. Completion of construction of Women Crisis Center and Bahay Tuluyan Center for abused women, young and adult with a total floor area of 200 square meters.
- b. Construction of Community-based Rehabilitation Center for the initial assessment of persons with disabilities allotting an area of about 500 square meters at Barangay Biclatan.
- c. Establishment of Drug Abuse Counselling Center at Barangay Navarro or Biclatan allotting an area of about 500 square meters.
- d. Construction of additional High-Capacity Evacuation Center with an area of 1,000 square meters at Barangay Biclatan or San Juan.
- e. Sports Development Program for Athletes and Maintenance of City Sports Facilities.
- f. Construction of additional New Youth Home and Bahay Pag-asa designing youth and elderly friendly living spaces with a total floor area of 200 square meters.

These facilities will be provided with the type of amenities where they can socialize, get initial rehabilitation and be provided with relevant skills to make them productive.

Table 5. Projected Number of Day Care Centers, 2022-2030

Year	Projected Household	Required Number of Day Care Center		Requirement per Year (Current need is addressed)	Requirement per Year (Current need NOT yet addressed)	Yearly Addressing the Requirement (Current need NOT yet addressed)
		1:500 families	if 2 sessions/ DCC			
2020	117,910	236	118			
2021	127,192	254	127	Current Need, 2021 = 63 DCC		21
2022	137,204	274	137	10	73	21
2023	148,005	296	148	11	84	21
2024	159,655	319	160	12	96	21
2025	172,223	344	172	13	108	21
2026	185,780	372	186	14	122	21
2027	200,405	401	200	15	136	21
2028	216,180	432	216	16	152	21
2029	233,197	466	233	17	169	21
2030	251,554	503	252	18	188	20

Note: Projection based on DHSUD Guideline

Source: Philippine Statistics Authority, 2020; Office of the City Planning and Development Coordinator

Table 6. Projected Number of Day Care Center by Barangay, 2022-2030

City/Barangay	Required Number of Day Care Center per Year (1:500 families, 2session/DCC)									Existing DCC, 2018	Demand DCC, 2030
	2022	2023	2024	2025	2026	2027	2028	2029	2030		
1896 Pob. (Bgy. 8)	0	0	0	0	0	0	0	0	0	0	0
Alingaro	1	1	2	2	2	2	2	2	3	1	2
Arnaldo Pob. (Bgy. 7)	0	0	0	0	0	0	0	0	1	0	1
Bacao I	5	6	6	7	7	8	8	9	10	1	9
Bacao II	3	4	4	4	5	5	6	6	6	1	5
Bagumbayan Pob. (Bgy. 5)	0	0	0	0	0	0	0	1	1	1	0
Biclatan	7	7	8	9	9	10	11	12	13	2	11
Buenavista I	2	2	2	3	3	3	3	3	4	1	3
Buenavista II	3	4	4	4	4	5	5	6	6	2	4
Buenavista III	3	3	3	3	4	4	4	5	5	1	4
Corregidor Pob. (Bgy. 10)	0	0	0	0	0	1	1	1	1	1	0
Dulong Bayan Pob. (Bgy. 3)	0	0	0	0	0	1	1	1	1	1	0
Gov. Ferrer Pob. (Bgy. 1)	0	0	0	0	0	0	0	0	0	0	0
Javalera	2	3	3	3	3	4	4	4	4	2	2
Manggahan	7	7	8	9	9	10	11	12	13	4	9
Navarro	14	15	16	17	19	20	22	24	25	5	20
Panungyanan	1	1	1	1	1	2	2	2	2	1	1
Pasong Camachile I	7	7	8	9	9	10	11	12	13	4	9
Pasong Camachile II	11	12	13	14	15	17	18	19	21	7	14
Pasong Kawayan I	2	2	2	3	3	3	3	3	4	1	3
Pasong Kawayan II	17	18	19	21	23	24	26	28	31	5	26
Pinagtipunan	2	2	3	3	3	3	4	4	4	1	3
Prinza Pob. (Bgy. 9)	0	0	0	0	0	0	0	0	0	1	-1
Sampalucan Pob. (Bgy. 2)	0	0	0	0	0	0	0	0	0	0	0
San Francisco	24	26	28	30	32	35	38	41	44	12	32
San Gabriel Pob. (Bgy. 4)	1	1	1	1	1	1	1	1	1	1	0
San Juan I	2	2	2	2	2	3	3	3	3	1	2
San Juan II	3	3	3	3	3	4	4	4	5	1	4
Santa Clara	1	1	1	1	1	1	2	2	2	3	-1
Santiago	12	13	14	15	16	17	19	20	22	1	21
Tapia	2	2	2	2	2	2	3	3	3	1	2
Tejero	3	3	4	4	4	5	5	5	6	1	5
Vibora Pob. (Bgy. 6)	0	0	0	0	0	0	1	1	1	0	1
City of General Trias	137	148	160	172	186	200	216	233	252	64	188

Note: Projection based on DHSUD Guideline

Source: Philippine Statistics Authority, 2020; Office of the City Planning and Development Coordinator

Document Source: Comprehensive Land Use Plan, 2022-2030, Volume 3